

Features

- Simple plug-in installation
- Supplied with adjustable right angled grounded mounting block or flying lead ground
- Low insertion and return loss
- Wide operating frequency spectrum
- Field serviceable, with replaceable gas arrestor
- N-bulkhead (MF), F-type (MF) and SMA (MF) models also available

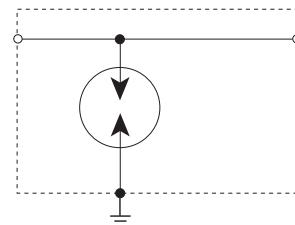


The Coaxial Surge Protector (CSP) family of surge diverters is designed to provide robust and reliable protection from transients on coaxial antenna RF feeder cables. They are comprised of a leadless gas arrestor housed in a chrome plated brass block. Careful design and precision machining has allowed the match between the characteristic impedance of the unit and the cable to be optimized. This attention to detail has resulted in a unit capable of operating at typical power and frequency levels of 900W and 3GHz respectively, while minimizing the insertion and return losses.

Model	CSP1BNC90	CSP1NMF90	CSP1BNC600	CSP1NMF600	CSP1NB90	CSP1NB600
Frequency	DC to 3 GHz typical					
Max Discharge Current, I _{max}	20kA 8/20 μs					
Dimensions H x D x W: mm (in)	25 x 57 x 25 (1 x 2.24 x 1)					
Weight: kg (lbs)	0.2 (0.44)					
Enclosure	IP20 (NEMA®-1)					
Connection	BNC, Male/Female	N-Type, Male/Female	BNC, Male/Female	N-Type, Male/Female	N-Type Female/Female	
Mounting	Separate mounting bracket and ground lead connection provided					
Approvals	CE					
Impulse Life	400 impulses @ 500A 10/1000μs					
Insulation Resistance	10 GΩ					
Temperature	-40°C to 90°C (-40°F to 194°F)					
Capacitance	1.5 pF					
Spark Over Voltage @100V/μs	450 V		1,100 V		450 V	1,100 V
Spark-Over Voltage @100V/s	72 V - 108 V		480 V - 720 V		72 V - 108 V	480 V - 720 V

Note: To select the appropriate protection voltage, use the following procedure:

1. Determine the transmitter power in Watts (P).
2. Determine the VSWR. If unsure, use 1.5.
3. $V_{peak} = VSWR \times 1.4 \times \sqrt{(50P)}$.
4. If $V_{peak} < 72V$, use CSP XXX 90.
If $V_{peak} > 72V$ and $< 480V$, use CSP XXX 600.
5. Taking this value of VSWR and allowing a little margin, this means that typically the 90V protector is used for Receivers and Transmitters up to 20W, while the 600W protector can be used for transmitters up to 900W.



WARNING

ERICO products shall be installed and used only as indicated in ERICO's product instruction sheets and training materials. Instruction sheets are available at www.erico.com and from your ERICO customer service representative. Improper installation, misuse, misapplication or other failure to completely follow ERICO's instructions and warnings may cause product malfunction, property damage, serious bodily injury and death.

Copyright ©2011 ERICO International Corporation. All rights reserved.

CADDY, CADWELD, CRITEC, ERICO, ERIFLEX, ERITECH, and LENTON are registered trademarks of ERICO International Corporation.

www.erico.com

ERICO®
E1059S-WWEN E872LT11WWEN WB0711

Banhay join stock company: www.banhay.com

