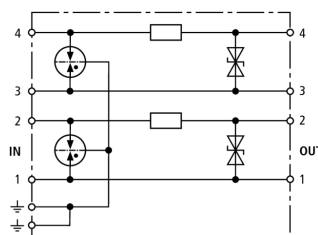


BVT MTTY 24 (918 407)

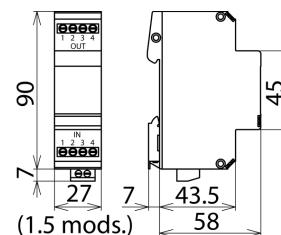
- Cost-effective compact protection
- For installation in conformity with the lightning protection zones concept at the boundaries from $0_B - 2$ and higher



Figure without obligation



Basic circuit diagram BVT MTTY 24



Dimension drawing BVT MTTY 24

Energy-coordinated surge arrester, no leakage currents to earth, for two unearthed pairs. Unbalanced use of the decoupling impedance.

Type	BVT MTTY 24
Part No.	918 407
SPD class	TYPE 2 P1
Nominal d.c. voltage (U_N)	24 V
Max. continuous operating d.c. voltage (U_C)	26.8 V
Max. continuous operating a.c. voltage (U_C)	18.9 V
Nominal current (I_L)	0.1 A
C2 Total nominal discharge current (8/20 μ s) (I_n)	20 kA
C2 Nominal discharge current (8/20 μ s) per line (I_n)	10 kA
Voltage protection line-line for I_n C2 (U_p)	≤ 65 V
Voltage protection level line-PG for I_n C2 (U_p)	≤ 700 V
Voltage protection level line-line at 1 kV/ μ s C3 (U_p)	≤ 36 V
Voltage protection level line-PG at 1 kV/ μ s C3 (U_p)	≤ 600 V
Series resistance per line	2.2 ohms per pair
Cut-off frequency line-line (f_c)	10 MHz
Capacitance line-line (C)	≤ 1 nF
Operating temperature range	-40°C...+80°C
Degree of protection	IP 20
For mounting on	35 mm DIN rails acc. to EN 60715
Connection (input/output)	screw / screw
Cross-sectional area, solid	0.08 - 2.5 mm ²
Cross-sectional area, flexible	0.08 - 2.5 mm ²
Tightening torque (terminals)	0.5 Nm
Earthing via	screw terminal
Enclosure material	thermoplastic, UL 94 V-0
Colour	yellow
Test standards	IEC 61643-21 / EN 61643-21
Approvals	GOST
Weight	104 g
Customs tariff number	85363010
GTIN	4013364095335
PU	1 pc(s)

We reserve the right to introduce changes in performance, configuration and technology, dimensions, weights and materials in the course of technical progress. The figures are shown without obligation.