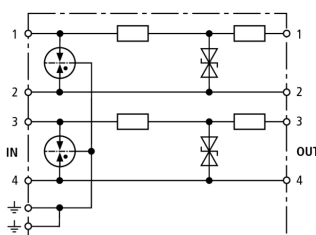


BVT TTY 24 (918 400)

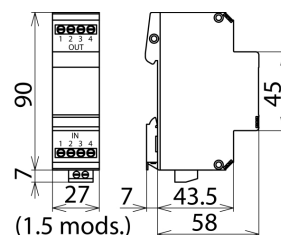
- Simultaneous protection of two TTY loops
- Additional decoupling with regard to the terminal device
- For installation in conformity with the lightning protection zones concept at the boundaries from $O_b - 2$ and higher



Figure without obligation



Basic circuit diagram BVT TTY 24



Dimension drawing BVT TTY 24

Owing to the additional decoupling resistors at the output, only diodes with a low absorption capacity in the terminal equipment are integrated into the energy coordination of the protection stages. This is especially important for optocoupler interfaces.

Type Part No.	BVT TTY 24 918 400
SPD class	TYPE 2 Pt
Nominal d.c. voltage (U_N)	24 V
Max. continuous operating d.c. voltage (U_C)	26.8 V
Max. continuous operating a.c. voltage (U_C)	18.9 V
Nominal current (I_L)	0.1 A
C2 Total nominal discharge current (8/20 μ s) (I_n)	10 kA
C2 Nominal discharge current (8/20 μ s) per line (I_n)	10 kA
Voltage protection line-line for I_n C2 (U_p)	≤ 65 V
Voltage protection level line-PG for I_n C2 (U_p)	≤ 700 V
Voltage protection level line-line at 1 kV/ μ s C3 (U_p)	≤ 36 V
Voltage protection level line-PG at 1 kV/ μ s C3 (U_p)	≤ 600 V
Series resistance per line	17.2 ohms per pair
Cut-off frequency line-line (f_c)	8 MHz
Capacitance line-line (C)	≤ 1 nF
Operating temperature range	-40°C...+80°C
Degree of protection	IP 20
For mounting on	35 mm DIN rails acc. to EN 60715
Connection (input/output)	screw / screw
Cross-sectional area, solid	0.08 - 2.5 mm ²
Cross-sectional area, flexible	0.08 - 2.5 mm ²
Tightening torque (terminals)	0.5 Nm
Earthing via	screw terminal
Enclosure material	thermoplastic, UL 94 V-0
Colour	yellow
Test standards	IEC 61643-21 / EN 61643-21, UL 497B
Approvals	CSA, GOST
Weight	104 g
Customs tariff number	85363010
GTIN	4013364074231
PU	1 pc(s)

We reserve the right to introduce changes in performance, configuration and technology, dimensions, weights and materials in the course of technical progress. The figures are shown without obligation.