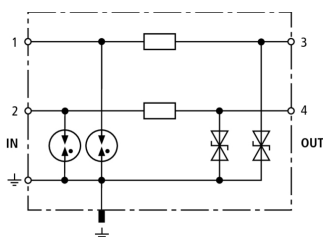


## DCO RK ME 12 (919 920)

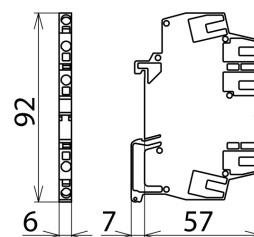
- Standard protection with terminal blocks
- Low series resistance
- For installation in conformity with the lightning protection zones concept at the boundaries from  $O_b-2$  and higher



Figure without obligation



Basic circuit diagram DCO RK ME 12



Dimension drawing DCO RK ME 12

Energy coordinated two-stage arrester for protecting two single lines with common reference potential as well as unbalanced interfaces.

| Type   | DCO RK ME 12                     |
|--|----------------------------------|
| Part No.   | 919 920                          |
| SPD class  | <b>TYPE 2 [P]</b>                |
| Nominal voltage ( $U_n$ )  | 12 V                             |
| Max. continuous operating d.c. voltage ( $U_c$ )                 | 14 V                             |
| Max. continuous operating a.c. voltage ( $U_c$ )                 | 9.5 V                            |
| Nominal current ( $I_n$ )  | 0.5 A                            |
| C2 Total nominal discharge current (8/20 $\mu$ s) ( $I_n$ )      | 10 kA                            |
| C2 Nominal discharge current (8/20 $\mu$ s) per line ( $I_n$ )   | 5 kA                             |
| Voltage protection level line-line for $I_n$ C2 ( $U_p$ )        | $\leq 55$ V                      |
| Voltage protection level line-PG for $I_n$ C2 ( $U_p$ )          | $\leq 40$ V                      |
| Voltage protection level line-line at 1 kV/ $\mu$ s C3 ( $U_p$ ) | $\leq 36$ V                      |
| Voltage protection level line-PG at 1 kV/ $\mu$ s C3 ( $U_p$ )   | $\leq 19$ V                      |
| Series resistance per line                                       | 1.8 ohms                         |
| Cut-off frequency line-PG ( $f_c$ )                              | 2.5 MHz                          |
| Capacitance line-line (C)  | $\leq 1.2$ nF                    |
| Capacitance line-PG (C)  | $\leq 2.4$ nF                    |
| Operating temperature range                                      | -40°C...+80°C                    |
| Degree of protection   | IP 00, with cover IP 20          |
| For mounting on  | 35 mm DIN rails acc. to EN 60715 |
| Connection (input/output)  | spring / spring                  |
| Cross-sectional area, solid                                      | 0.08 - 2.5 mm <sup>2</sup>       |
| Cross-sectional area, flexible                                   | 0.08 - 2.5 mm <sup>2</sup>       |
| Earthing via   | DIN rail / terminal              |
| Enclosure material   | polyamide PA 6.6                 |
| Colour   | yellow                           |
| Test standards   | IEC 61643-21 / EN 61643-21       |
| SIL classification   | SIL2 / SIL3 <sup>*)</sup>        |
| Approvals  | GOST                             |
| Weight   | 37 g                             |
| Customs tariff number  | 85363010                         |
| GTIN   | 4013364087781                    |
| PU   | 1 pc(s)                          |

<sup>\*)</sup>For more detailed information, please visit [www.dehn.de/en/sil/](http://www.dehn.de/en/sil/)

We reserve the right to introduce changes in performance, configuration and technology, dimensions, weights and materials in the course of technical progress. The figures are shown without obligation.